



Enrich Life Vision/ Mission/ Values

Updated February 2nd, 2024.

Our Church Model is based around how the early church began in Acts 2: 41-47. After many people were saved during the day of Pentecost they gathered together to learn the apostles' teaching, to share their possessions and devote themselves to Christ, they broke bread, ate and did communion together, and they praised God as many people were added to their community. They would eventually go out and share the good news of Jesus with the rest of the world.

This is how Enrich Life Church Functions. As you become a member of Enrich Life you will read our values and vision and understand the expectations that come with being a part of this Church.

Enrich Life Vision:

A Church committed to serving others, growing together, and worshipping Jesus

Enrich Life Church strives to create an intentional community that develops concrete and clear systems of discipleship. Enrich Life is founded upon two fundamental roots that support action to carry out our vision of raising disciples who follow Jesus Christ with their lives.

Enrich Life Mission:

Our roots are Service and Growth. When both of these roots are healthy, Enrich Life is vibrant and full of life. Our community will grow by building relationships through service to our communities and to one another as well as through growth as individuals and a community, all while growing deeper in relationship with Jesus. Our community will look out for each other while growing and serving together. We will also grow by gathering together to worship Jesus in our church gatherings.

-How we GROW:

The major way of achieving this goal of growth is through building a Small-Group-Focused Community. Our goal is to foster small, mentoring groups. As we start meeting in one gathering we will grow to meet around tables with table leaders. Eventually, these table leaders will lead groups in their homes/dorm rooms. Enrich Life strives to grow confident leaders that can lead people through scripture and develop their relationship with Jesus. This community will coach people in how to navigate this growth and we will all grow together.

-How we SERVE:

Serving is essential at Enrich Life. We have various strategies in how we serve. We serve the University of Regina through our student club, "Enrich UofR" and by providing the service,

“RedFrogs”. We serve our city by providing food for those in need and by offering support to areas in need to enrich the lives of those around us.

These are the three ways of how our Church functions and grows together.



Enrich Life Values:

These values are equal in practice as they make up a holistic mission of Enrich Life Church

The Gospel

The center of Enrich Life Church revolves around the trinitarian God and His word. We will always learn God's word together as a community. We will serve the community around us with a mission in mind to share the good news of Jesus through our service and charity. We will not do charity for charity's sake rather we will do charity because Christ has told us to love our neighbors and share His good news with the world. Jesus has not left us as orphans rather He has given us the Holy Spirit and shown us mercy as His church therefore we will show others the same mercy by helping them and walking with them.

Empowerment:

To empower someone is to encourage and support them to become who Jesus calls them to be. They are growing in maturity, full of the fruit of the Spirit, and trained and capable to serve others the same way. Empowerment cannot happen without the teaching of the Word, helping them to discover their giftings, providing tools to grow spiritually, mentally, and physically, and coaching and mentoring them in their personal lives. The person of the Holy Spirit empowers His believers to go out and share the gospel of Jesus in the world.

Relationships:

Relationships are vital to a healthy community. Relationships keep us on course and alleviate times of loneliness. We value growth with each other and in our relationship with Jesus. We walk together and leave nobody behind as we continue to deepen our roots with each other.

Service:

We see the needs of the individuals, families, and communities in our city and on the University of Regina campus and value serving them. We will serve with no strings attached. Enrich Life will bring hope through service into communities who seek our support and consent to receive us. Our goal is to build deep roots that develop real trust, mutual respect, and healthy relationships.

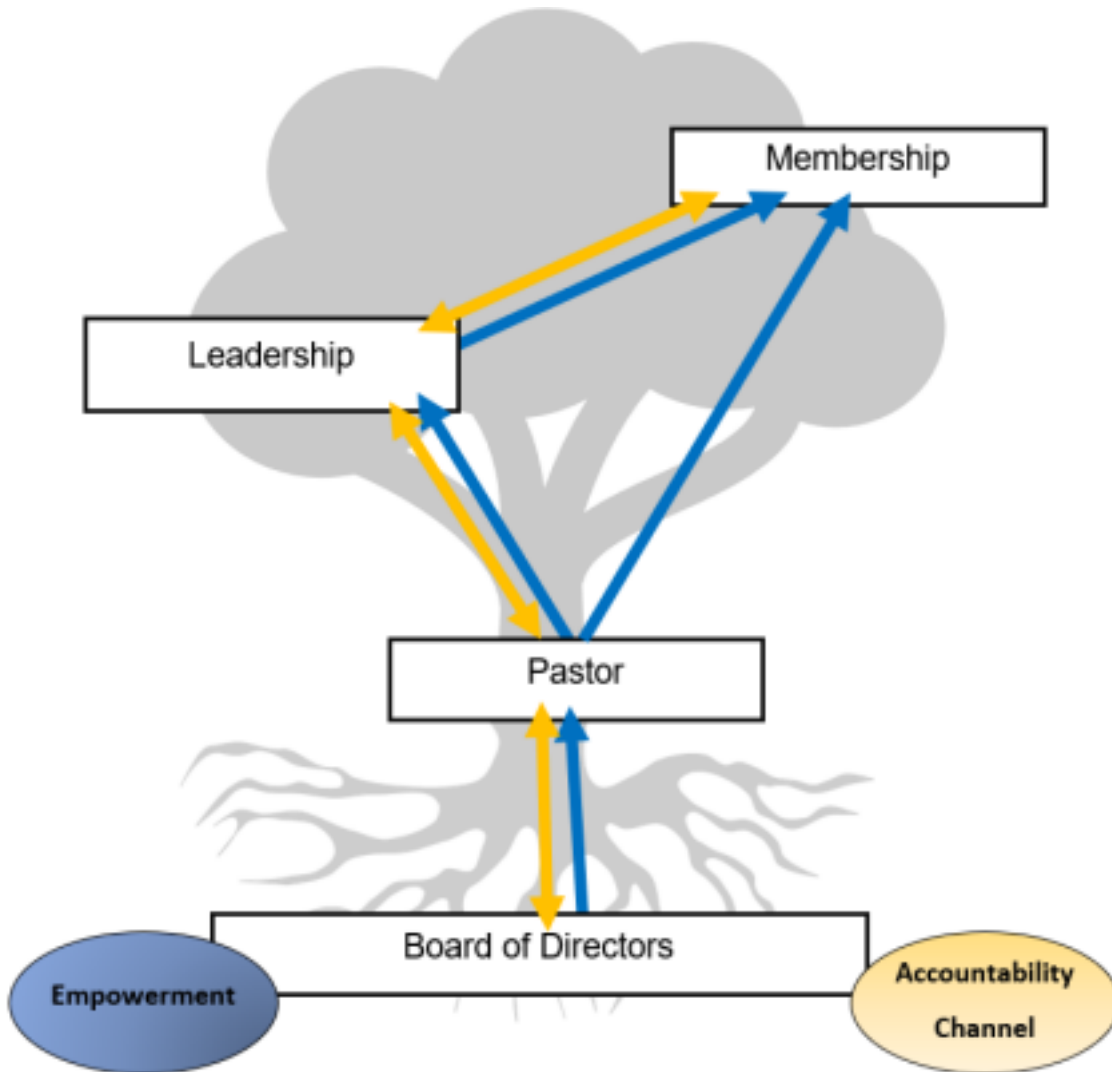
Sharing:

We value the voices in our community. We will make sure that all voices can be heard. We will share our unique perspective and stories to equip His people for works of service and explain the Gospel to those around us. We will learn weekly from the stories shared in our community of what Jesus is doing in our lives. Our community will be confident and wise in knowing when (and how) to share the truth and grace of Jesus.

Accountability:

We value healthy growth and this requires accountability. This includes accountability to grow in healthy habits through strong relationships to encourage transformed, Christ-devoted lifestyles. Our community needs Jesus since humanity is still imperfect. We will walk alongside each other in challenges as we build each other up by holding open doors to allow our community to be better. We will make each other better by being constructive, truthful, and grace-filled.

II. Church Leadership Structure



Work in Progress (Will develop this in Policies and Procedures Document in June 2021)
“Everyone is **directly** accountable to the Board of directors and the Board of Directors is **directly** accountable to everyone. (eg. If there was an accusation/complaint against anyone, it will go through the Board of Directors **directly** UNLESS the accusation is against the Board or a Director in which case it will go through the Leadership and Pastor.)

The Board of Directors **directly** empowers the Pastor.

The Pastor **directly** empowers/coaches Leadership (?and Membership?)